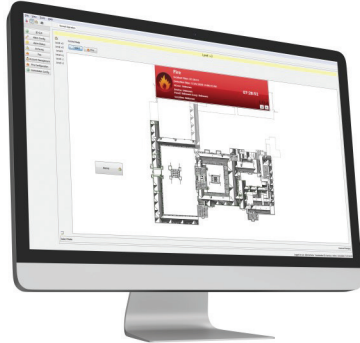


L@ti-View Graphics Application

PC Workstation Connectivity for Fire Alarm Network



DESCRIPTION

This professional-grade graphics system will complement the new generation of fire alarm control panels, while also being backward-compatible with the current analog product.

L@ti-View enables the creation of a 2D map of any site or building to monitor fire safety and detection, and automatically switches to an area where a fire device has been activated to allow immediate viewing and investigation of an event. It also displays the relevant emergency assembly and fire control points.

Fully-configurable on-site, L@ti-View supports dual screens allowing a dedicated screen for the 2D graphic map and a separate screen for system management. It also reports any configuration errors, ensuring that the graphics system is maintained and updated whenever the panel configuration is revised.

STANDARD FEATURES

- L@ti-View works with L@titude, FireNET and FireNET Plus panels.
- Reports configuration mismatch errors – ensuring that the graphics system is properly maintained and updated whenever there are any panel configuration revisions
- Powerful event log filtering and reporting
- Manage the state of the fire system using a combination of graphical images and system controls
- Programmable macro buttons to perform panel control operations
- Full map navigation using configurable buttons or map areas
- Device analog value reporting
- Perform device and zone disablements / enablements
- Operate and restore loop output devices for testing purposes
- Dual screen support for clarity

HOCHIKI MODELS

LLUL2004	L@ti-View - L@titude (UL) based panels - 4 panel license
LLUL2016	L@ti-View - L@titude (UL) based panels - 16 panel license
LLUL2128	L@ti-View - L@titude (UL) based panels - 127 panel license

Model LLUL2004 is equivalent to ordering code 0101-02790, Model LLUL2016 is equivalent to ordering code 0101-02800, Model LLUL2128 is equivalent to ordering code 0101-02810

Specifications subject to change without notice.

Continued on back.

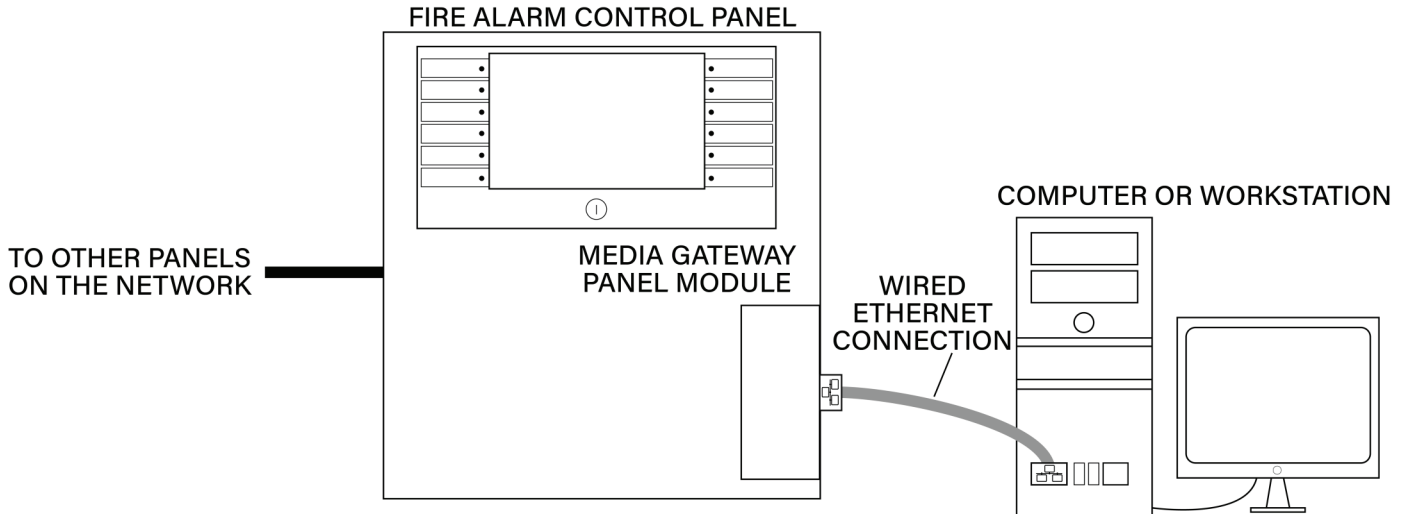
Hochiki America Corporation
7051 Village Drive, Suite 100, Buena Park, CA 90621-2268
Phone: 714/522-2246 Fax: 714/522-2268
Technical Support: 800-845-6692 or technicalsupport@hochiki.com

Find latest revision at www.hochiki.com

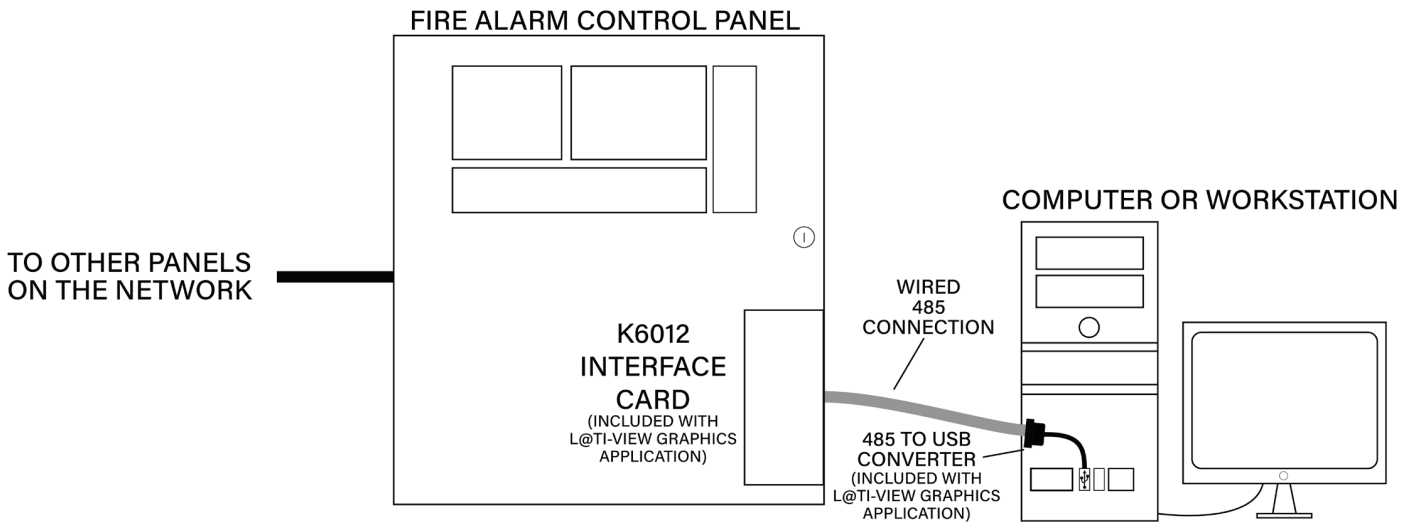
F0259 Rev1 06/2020

L@ti-View Graphics Application

L@TITUDE WIRING DIAGRAM



FireNET WIRING DIAGRAM



PC REQUIREMENTS

Processor	CPU Intel® Core™ i5 64 bit CPU
RAM	16 GB
Hard Drive Size	500 MB
Display	1280 x 768
Ports	USB 2.0, and Ethernet (L@titude). An additional USB 2.0 port is required for a FireNET Panel.
Operating System	Windows 10 Pro 64 bit
Internet Connection	Internet connectivity is necessary to perform updates and to take advantage of some features.